



# January 2025 Colorado Monthly Climate Summary

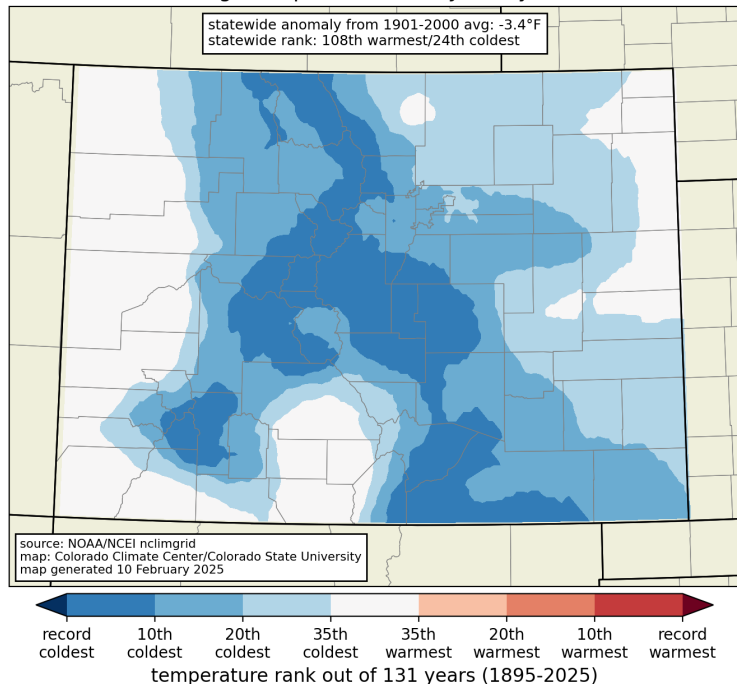
---



ATMOSPHERIC SCIENCE  
COLORADO STATE UNIVERSITY

# temperature

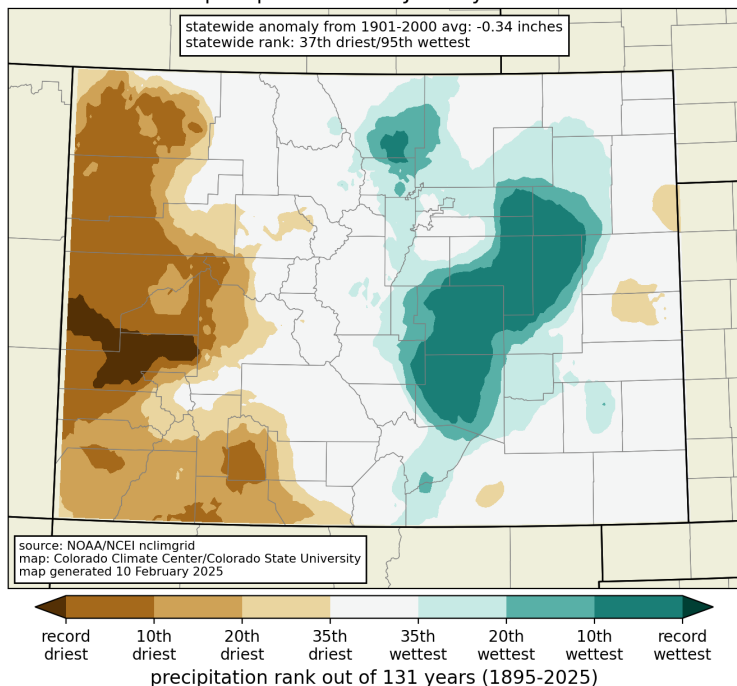
average temperature rank: January 2025



2025 got off to a chilly start in Colorado, with much colder-than-average conditions for January, especially in the central part of the state. A broad region through the mountains and into southeastern Colorado had a top-10 cold January. Statewide, it was the coldest January since 2007.

# precipitation

precipitation rank: January 2025



There was a strong west-east split for precipitation in January 2025. Parts of eastern Colorado were much wetter than average, while the western slope had one of its driest Januaries on record. Grand Junction had just 0.01" of precipitation, the 2<sup>nd</sup> driest January on record.



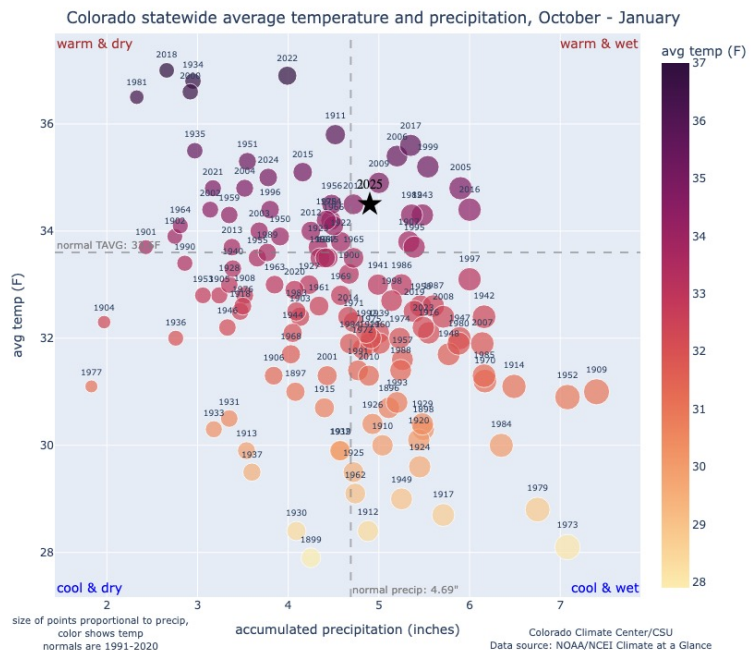
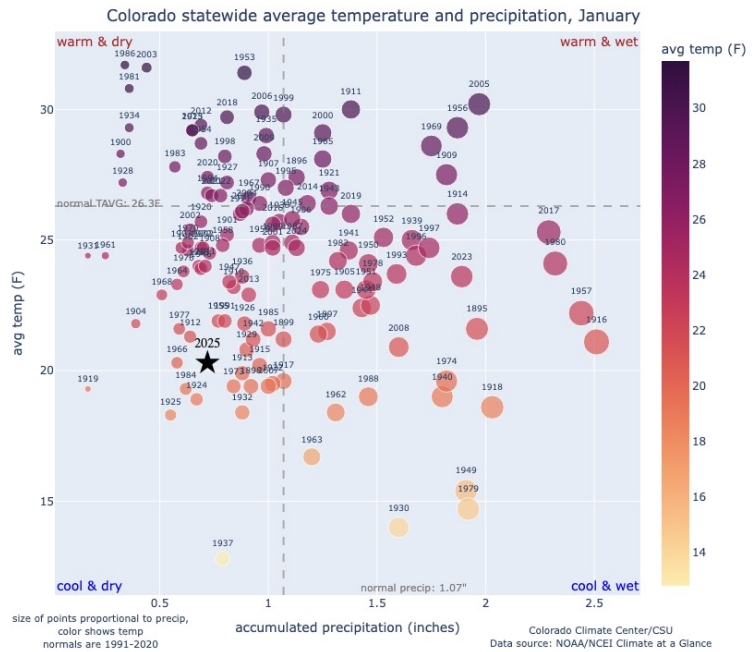
# quadrant charts

Each dot plots the precipitation on the x-axis and the temperature on the y-axis. Dots are colored based on temperature and size is based on precipitation. The current year is denoted with a star. Long-term averages are denoted by the dashed lines.

January 2025 fell in the cold and dry quadrant, a corner of the chart that has not been occupied much in recent years. Statewide it was tied for the 23<sup>rd</sup> coldest January, at 6.0° F colder than the 1991-2020 average and 3.4° F below the 20<sup>th</sup>-century average. It was tied for the 35<sup>th</sup> driest January statewide at 0.34" below average.

Even though January was cold, the water year to date remains warmer than average. It was tied for the 18<sup>th</sup> warmest first four months of the water year, 2.2° F warmer than the 20<sup>th</sup>-century average. For precipitation, it's tied for the 50<sup>th</sup> wettest start to the water year, 0.36" above average.

[view all quadrant charts](#)

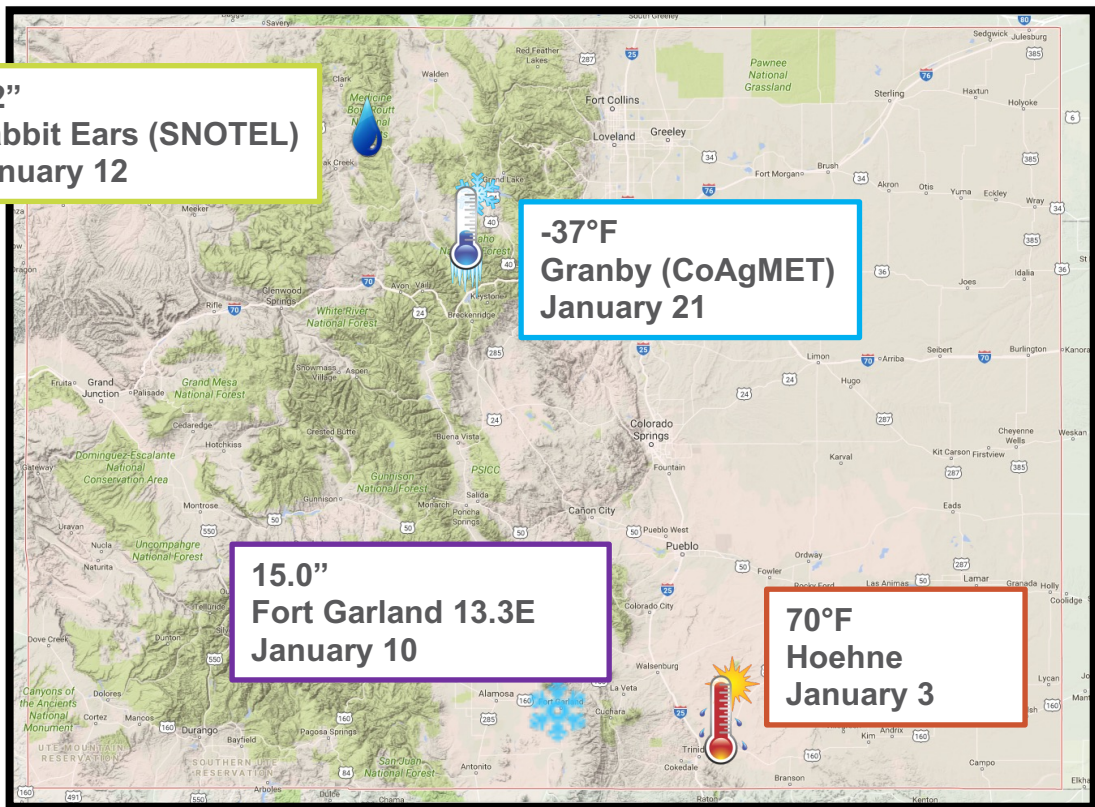


# records tied and broken

	High Max	Low Max	High Min	Low Min	Precip	Snow
Daily	11/17	40/490	3/16	25/423	21/43	12/30
Monthly	0/0	5/39	0/0	8/31	0/1	0/0
All-time	0/0	0/5	0/0	1/1	0/0	0/0

Tied/**Broken**, from NOAA National Centers for Environmental Information

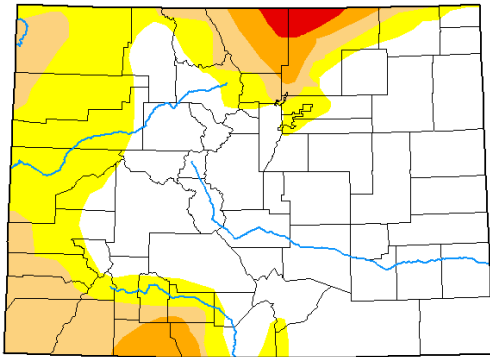
# state extremes





# drought & snowpack

## U.S. Drought Monitor Colorado



**January 28, 2025**  
(Released Thursday, Jan. 30, 2025)  
Valid 7 a.m. EST

Drought Conditions (Percent Area)

	None	D0-D4	D1-D4	D2-D4	D3-D4	D4
<b>Current</b>	61.15	38.85	17.11	4.82	0.98	0.00
<b>Last Week</b> 01-21-2025	71.59	28.41	13.84	3.23	0.98	0.00
<b>3 Months Ago</b> 10-29-2024	39.87	60.13	34.93	9.89	3.25	0.00
<b>Start of Calendar Year</b> 01-01-2025	71.40	28.60	10.78	4.08	0.98	0.00
<b>Start of Water Year</b> 10-01-2024	48.27	51.73	24.40	4.62	0.00	0.00
<b>One Year Ago</b> 01-30-2024	41.97	58.03	27.83	6.69	2.05	0.00

Intensity:



The Drought Monitor focuses on broad-scale conditions. Local conditions may vary. For more information on the Drought Monitor, go to <https://droughtmonitor.unl.edu/About.aspx>

Author:

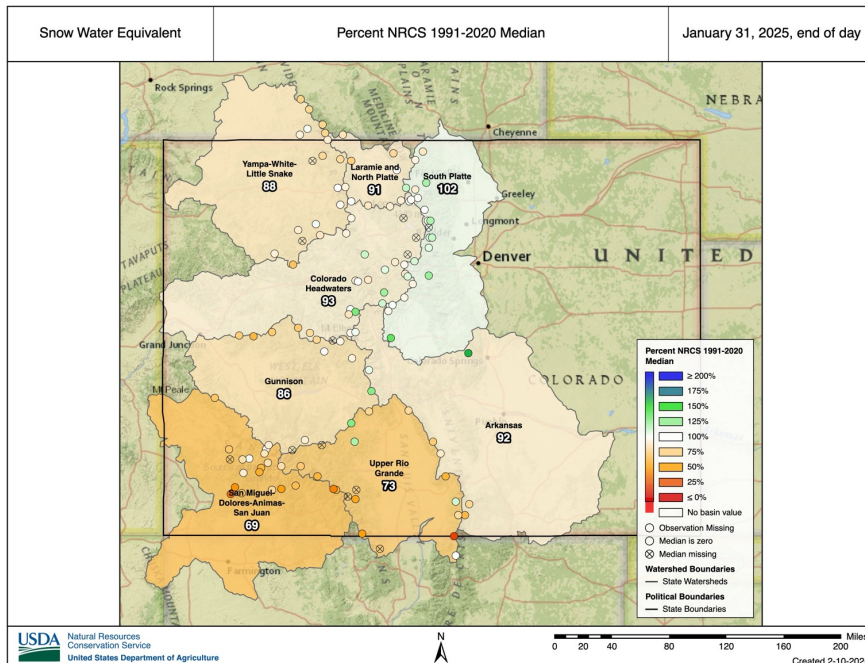
Brian Fuchs  
National Drought Mitigation Center



[droughtmonitor.unl.edu](https://droughtmonitor.unl.edu)

With the very dry January across western Colorado, drought conditions expanded and worsened in that part of the state. And although northern Colorado saw several rounds of snowfall in January, long-term precipitation deficits and drought conditions remain in place. About 17% of Colorado was in drought conditions as of January 28.

## [Colorado Drought Update Page](#)



With little snowfall in January, mountain snowpack largely flatlined during the month, especially in the southern basins. The South Platte basin was the only basin above average as of the end of January, with the Rio Grande and southwest basins falling well below average. The Mancos SNOTEL station in southwest Colorado had record low snowpack, about 6" below average.

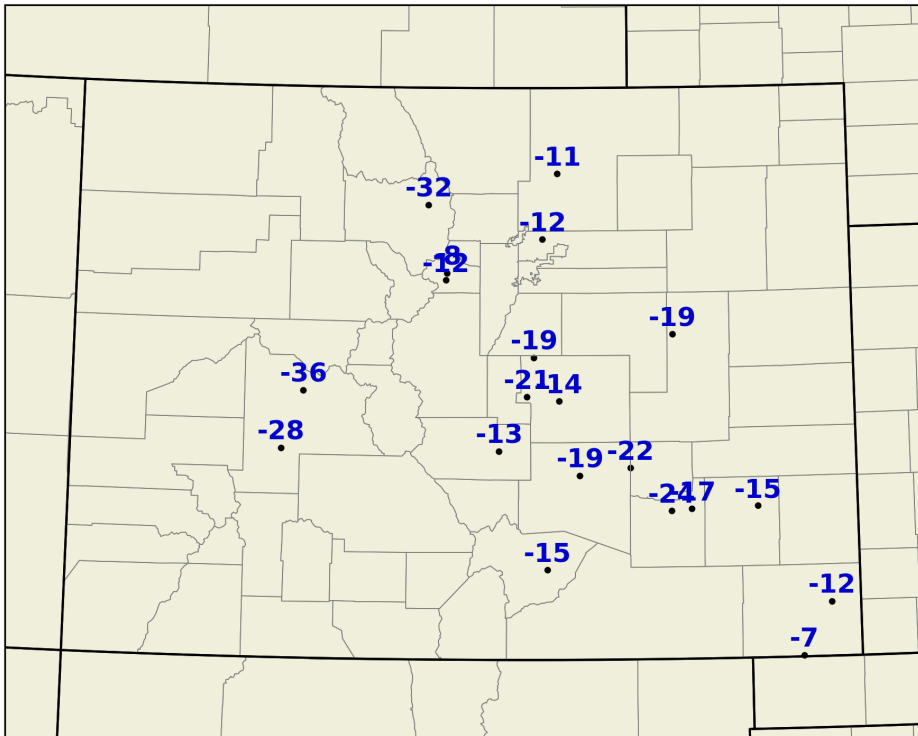


# significant events

**Mid-month Arctic blast:** For the 2<sup>nd</sup> year in a row, a very cold air mass moved across Colorado in mid-January. (Last year, [we crunched the numbers](#) and found that "Stock Show weather" is more legend than reality, but the last two years have definitely had Stock Show weather!)

As usual, the coldest air was in the mountain valleys, with temperatures dipping below  $-35^{\circ}\text{F}$  in Grand and Gunnison Counties. But the most anomalous cold was in the Arkansas River valley, which had multiple nights with lows below  $-20^{\circ}\text{F}$ . At Rocky Ford, it dipped below  $-15^{\circ}\text{F}$  on four consecutive nights (January 19, 20, 21, and 22), which had never happened before in over 125 years of records.

record minimum temperatures for 2025-01-21 ( $^{\circ}\text{F}$ )



STATION RECORDS	
BLUE MESA LAKE:	-28 (-20; 2008)
BRIGHTON 3 SE:	-12 (-4; 1984)
CABIN CREEK:	-12 (-10; 1996)
CAMPO 7 S:	-7 (4; 2022)
CANON CITY:	-13 (-10; 1935)
COLORADO SPRINGS MUNICIPAL AP:	-14 (-10; 1966)
CRESTED BUTTE:	-36 (-36; 1984)
GEORGETOWN:	-8 (-8; 1966)
GRAND LAKE 6 SSW:	-32 (-28; 1991)
GREELEY UNC:	-11 (-9; 1984)
JOHN MARTIN DAM:	-15 (-10; 1959)
LA JUNTA MUNICIPAL AIRPORT:	-17 (-12; 1966)
LIMON:	-19 (-15; 1966)
PALMER LAKE:	-19 (-6; 1966)
PUEBLO MEMORIAL AIRPORT:	-19 (-10; 1966)
ROCKY FORD 2 SE:	-24 (-17; 1930)
RUXTON PARK:	-21 (-18; 1987)
TACONY 13 SE:	-22 (-18; 1966)
WALSENBURG 1 NW:	-15 (-10; 1959)
WALSH 1 W:	-12 (-11; 1984)

Map of stations that tied or broke daily record low temperatures on January 21, at stations with at least 50 years of records



# CCC in the news

- ❑ **January 7, 2025:** [Northern Colorado cleans up first snowstorm of the season](#)
  - Featuring Russ Schumacher on 9News.
- ❑ **January 15, 2025:** [Arctic air to bring freezing, below-zero temperatures to Fort Collins this weekend](#)
  - Featuring Russ Schumacher in the Coloradoan.
- ❑ **January 24, 2025:** [How much snow did Florida get this week? More than Anchorage or New York City.](#)
  - *Featuring CoCoRaHS in the Florida Herald-Tribune.*

[Make sure to check out our blog \(and subscribe to get new blog posts in your inbox if you're interested!\)](#)

